

Health Promotion Strategies: Taking a best practices approach

Week 1 Introduction to Course

Michael Goodstadt Ph.D., C.Psych.
University of Toronto

2012Goodstadt: University of Toronto1

Introduction to HP Strategies course

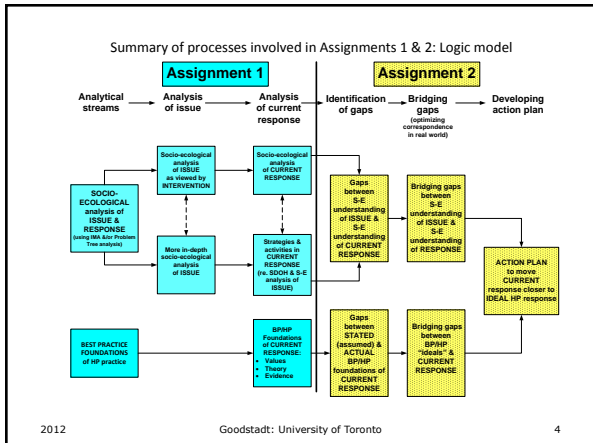
1. Personal introductions
2. House keeping: registration etc.
3. Introduction to course (walk through course outline)
4. Introduction to the Intervention Mapping Approach
5. Next week's assignments
6. Introduction to mind mapping

2012Goodstadt: University of Toronto2

Summary of processes involved in Assignments 1 & 2

	ASSIGNMENT 1		ASSIGNMENT 2				
	Current issue	Current response	Current response Identifying & describing current response (i.e., strategies, activities, processes)	Identifying "gaps" in current response	Identifying "ideal" response in real world	Bridging gap between current and "ideal" response	Action plan to move current response closer to "ideal" response
Socio-ecological analyses (May use Intervention Mapping Approach and/or "problem tree" analysis)	Socio-ecological analysis of health-related issue	Socio-ecological analysis of current response	The variety of strategies and activities employed in the response, and how these relate to the SDGs at the various levels associated with taking a socio-ecological approach in responding to your selected issue	Identifying gaps between socio-ecological understanding of (1) the issue versus (2) the response—this will identify strengths & weaknesses	Optimizing correspondence between socio-ecological ecological analyses of issue & response—within the constraints of the "real" world of HP practice	Proposed "bridging" of gap between socio-ecological understanding of the issue & the actual response	1. Objectives & indicators of success 2. Tasks/activities to achieve objectives 3. Timelines 4. Resources 5. Challenges 6. Evaluation
Underlying foundations of health promotion practice	Analysis of foundations of current response: • Values • Theories/beliefs • Evidence			Identifying gaps between stated/assumed foundations & values, theory, and evidence in the actual response	General HP principles that should guide all interventions/responses: 1. Is values, theory, evidence 2. Is interventions (i.e., multiple strategic strategies at multiple levels—see Bartholomew et al.) 3. Is addressing the social determinants of health	Proposed "bridging" of gap between HP best practices "ideals" and the current response	1. Who? 2. What? 3. How? 4. When? 5. With what resources? 6. With what intended effects?

2012Goodstadt: University of Toronto3



Making "Intervention Mapping Approach" easier for ourselves

1. "Mind mapping"
2. Integrating Intervention Mapping Approach With "Problem/Solution Trees" approach

2012Goodstadt: University of Toronto5

"Mind mapping"

- ❖ A visual representation of ideas
- ❖ Many software packages:
 - ❖ **MS Visio**
 - ❖ **cmmap:** <http://cmmap.ihmc.us/download/>
 - ❖ **SmartDraw**

2012Goodstadt: University of Toronto6

